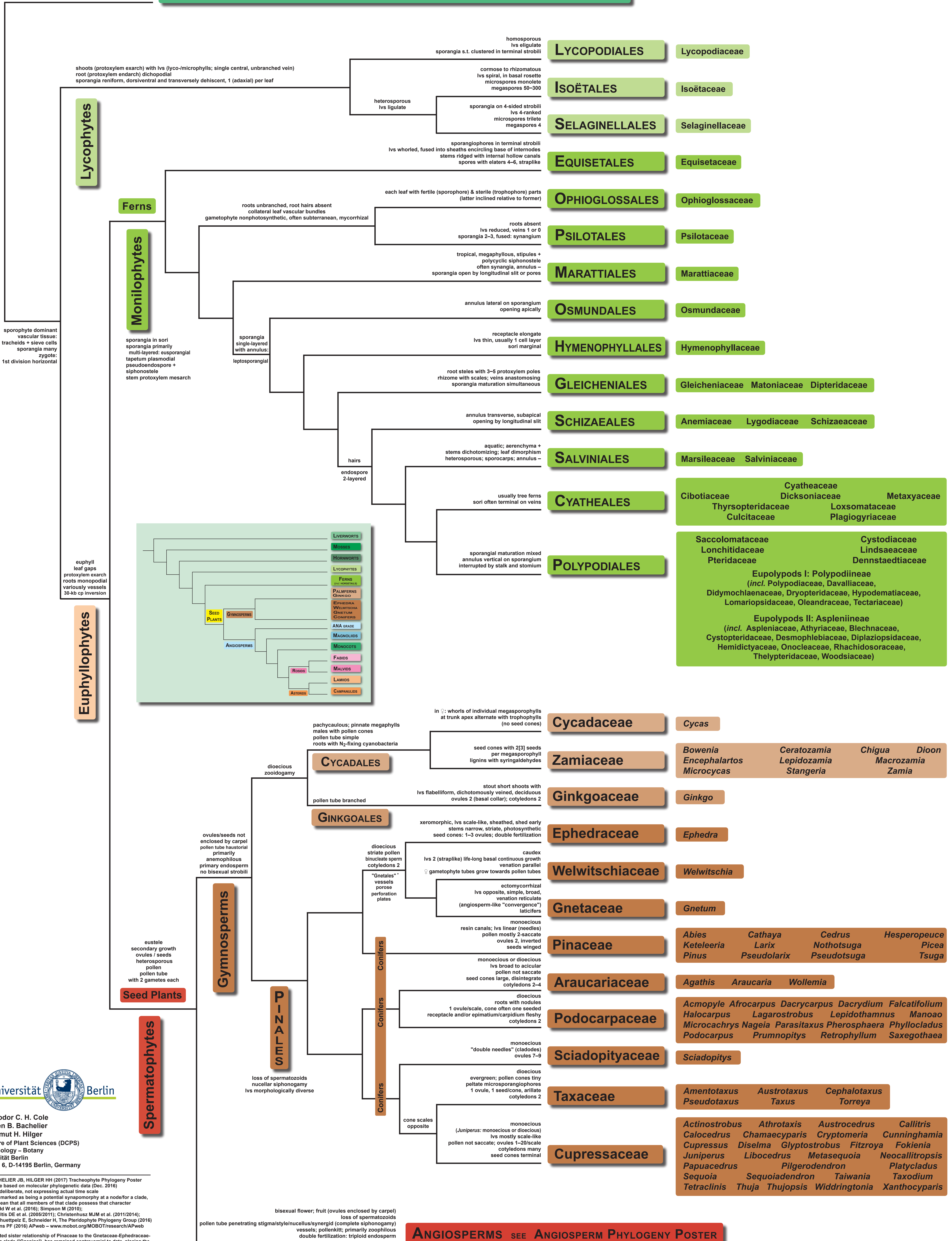


TRACHEOPHYTE PHYLOGENY

Vascular Plants – Systematics and Characteristics

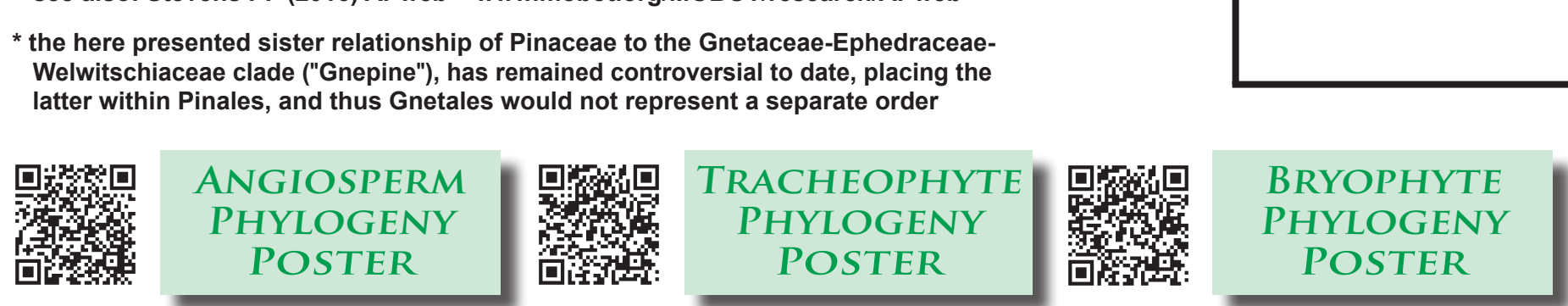
HORNWORTS, MOSSES, LIVERWORTS SEE "BRYOPHYTE" PHYLOGENY POSTER



Freie Universität Berlin

Dipl. Biol. Theodor C. H. Cole
 Prof. Dr. Julien B. Bachelier
 Prof. Dr. Hartmut H. Hilger
 Dahlem Centre of Plant Sciences (DCPS)
 Institute of Biology – Botany
 Freie Universität Berlin
 Altensteinstr. 6, D-14195 Berlin, Germany

COLE TCH, BACHELIER JB, HILGER HH (2017) Tracheophyte Phylogeny Poster
 - hypothetical tree based on molecular phylogenetic data (Dec. 2016)
 - branch lengths deliberate, not expressing actual time scale
 - if a character is marked as being a potential synapomorphy at a node/for a clade, this does not mean that all members of that clade possess that character
 - References: Judd W et al. (2016); Simpson M (2016); Soltis DE et al. (2009/2011); Christenhusz MJM et al. (2011/2014); Schuettpelz E, Schneider H, The Pteridophyte Phylogeny Group (2016)
 see also: Stevens PF (2016) APWeb – www.mobot.org/MOBOT/research/APWeb



ANGIOSPERMS SEE ANGIOSPERM PHYLOGENY POSTER